



Building Capacity for Value-Based Care

Community Behavioral Health Association of Maryland

September 16, 2019

Shannon Hall, Executive Director



Maryland's Data Warehouse

- What is it?
 - Cloud based repository of aggregate data points
 - Filter views, create “widgets” to look across different data sets
- How can you use it?
 - Drive system-wide quality by setting quality benchmarks based on best practices and peer experiences
 - Practice improvement within your organization
 - Leverage rates, contracts

Building Capacity for Value-Based Care

- Building Member Buy-In
- Modular, Flexible Approach
- Financing the Warehouse
- Lessons Learned
- Looking Forward
- Warehouse Demonstration

Project Timeline

Fall
2017

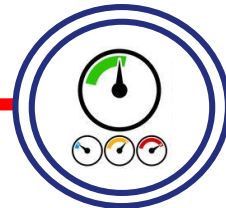


Readiness Assessment
Capacity, Lift, Buy-In

Fall
2018



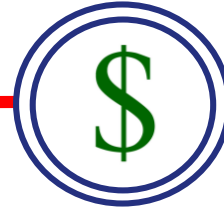
Cost Study Pilot
Group Learning
Warehouse SOW



Phase 1
Warehouse Build (BI!)
w/Cost Data
Next SOW

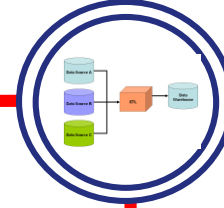


Data Workgroup
What, When,
How to Collect



Update Cost Data
Phase 2 SOW
20 Participants
Data & Ops Logistics

Fall
2019



Connectivity
EHR to Warehouse
State HIE (CRISP)
Update Warehouse
w/Cost Data



Data!!!
Modular by Program
Area, Loaded into
Warehouse

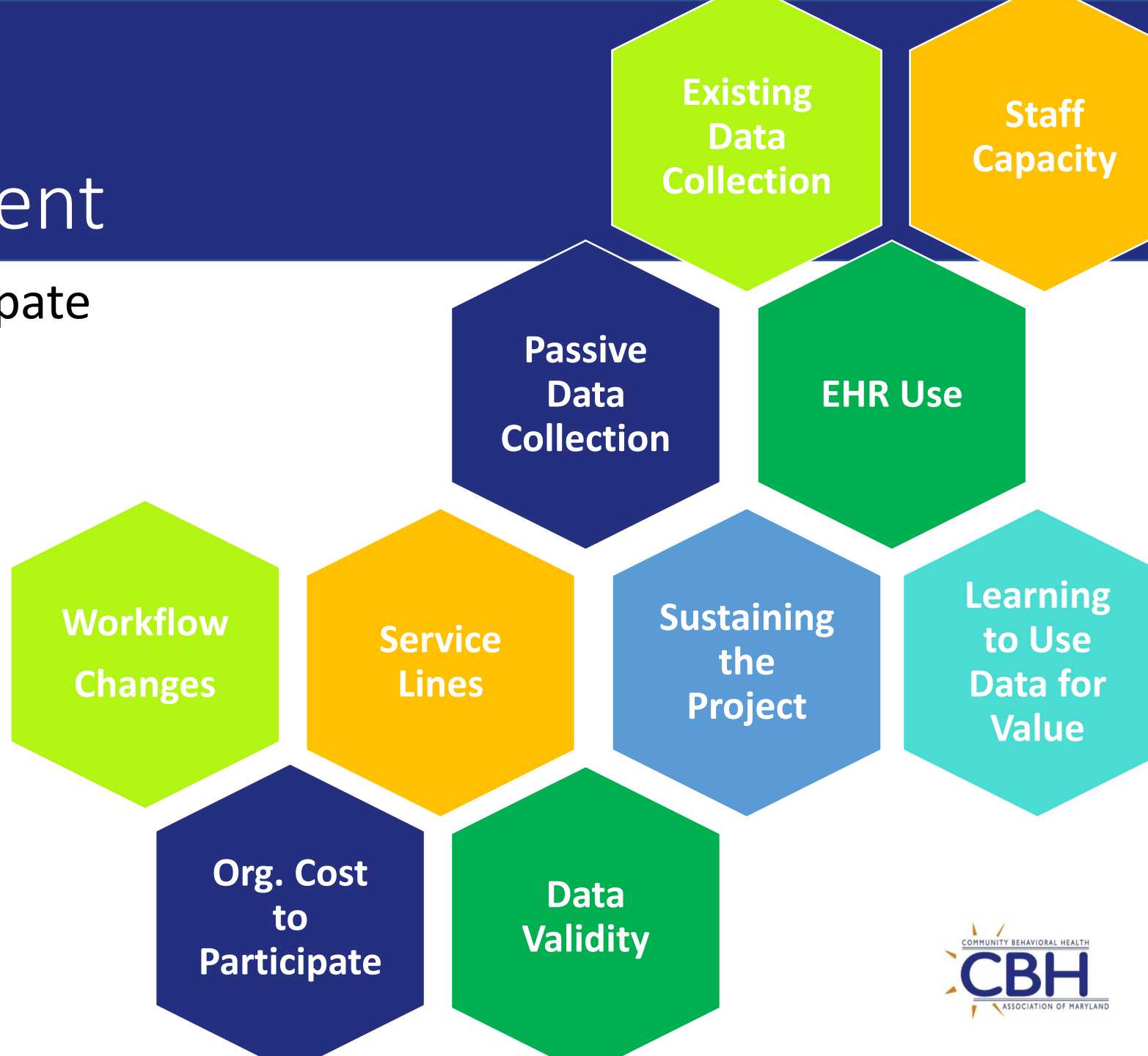
Fall
2020



Learning & Quality
Fully Functioning
Warehouse
Learning Groups

Building Buy-In: Readiness Assessment

- Member's ability to participate
 - past projects
 - current data collection
 - operational lift
- Areas of focus for buy-in
- Structure and rollout
- Shared funding
- Sustainability



Modular, Flexible Approach

- Pilot (plan, do, study, act)
- Flexible time frame
- Rollout in groups and stages
 - With clear communications
- One-on-one TA when needed
 - in person, phone, webinar
 - Build a common platform of capacity
- Respond to changing public BH environment
 - Carve-In, Rate Studies, System Redesign
- NO COST to participate



Financing the Warehouse



Association Ownership

- Grant funding for Cost Study Pilot
- Participants paid for their final report costs (sliding scale)



Network Ownership

- Stock option funding
- Potential contract funding



CBH contracting with MBHS to get aggregate data, shared staffing



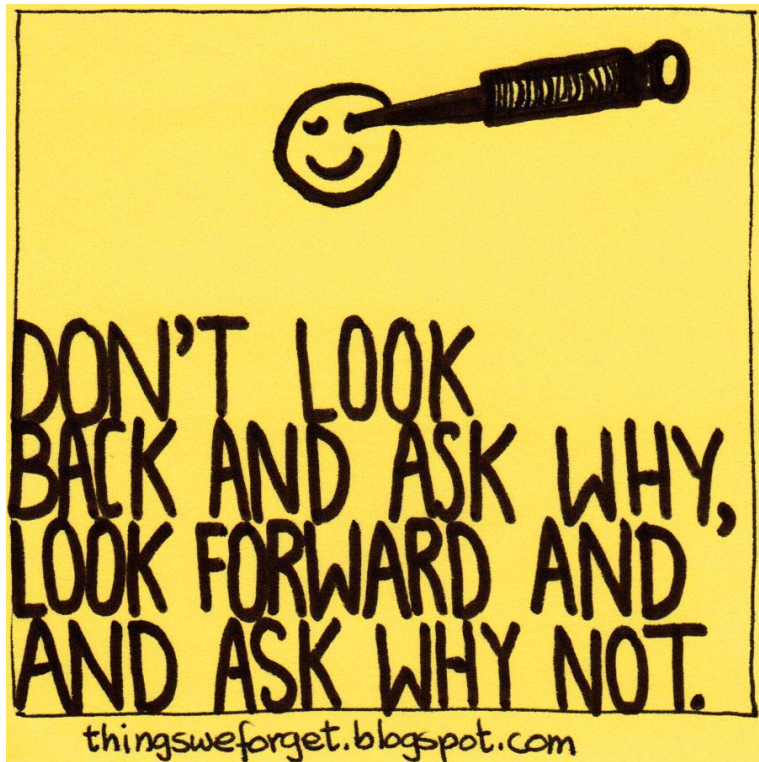
Lessons Learned

- More participants, more data, more valid findings
- Communications (CEO, CFO, CAO, HR, Finance)
 - Data definitions
 - What to capture
 - When things are due
- Time to complete/gather data
- New uses for data

Flexibility and clear communication can save the day.



Looking Forward



- Move from cost data to program and outcome data
 - What data to collect, tools to use, and benchmarking
- Train providers on the complete business intelligence tool
- Course correct to stay current with MBHS contract needs
- Form learning communities

Thank you!

shannon@mdcbh.org